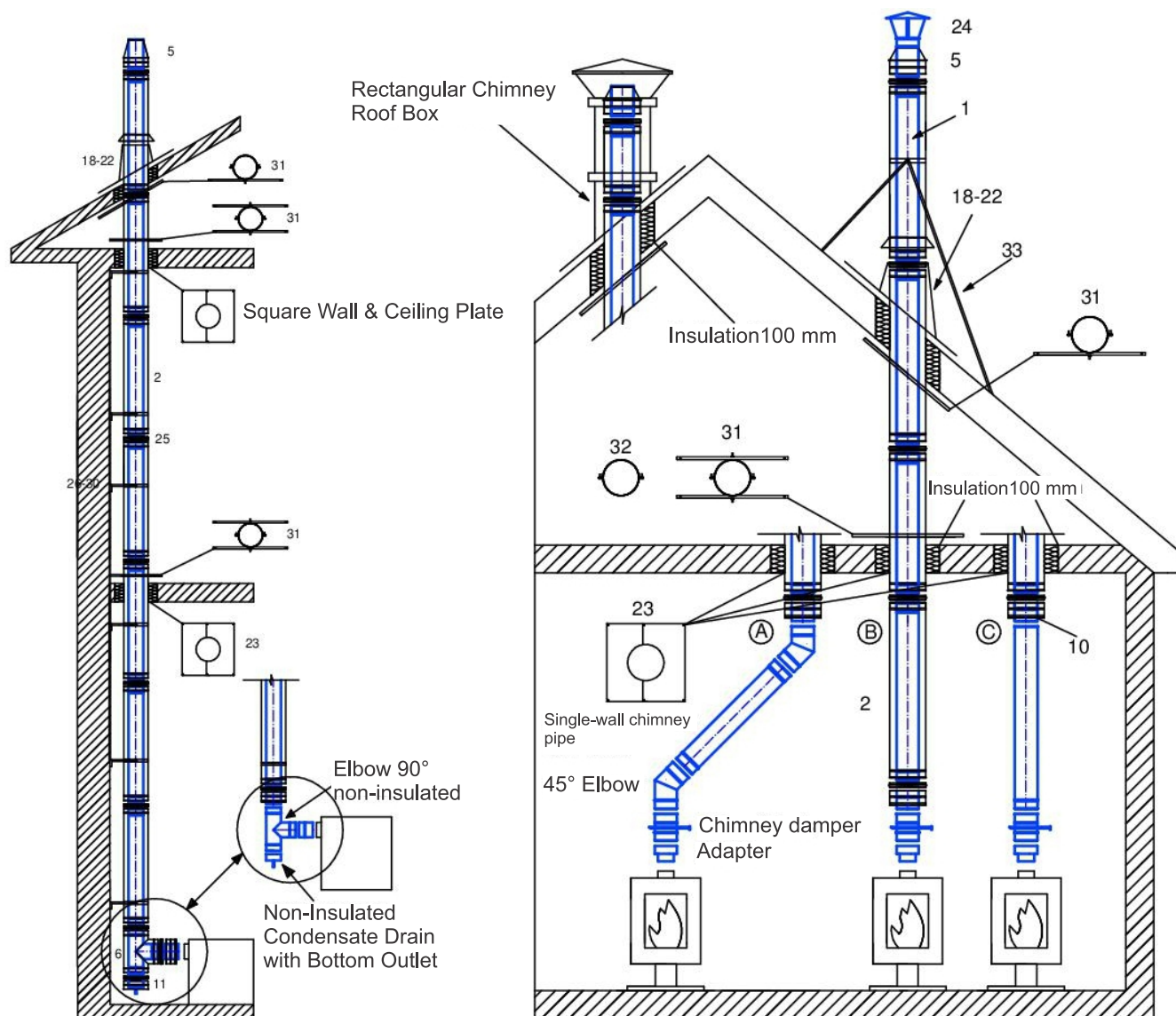


## Internal installation diagram



## Designations

- 1 - Insulated Chimney Pipe 1000 mm
- 2 - Insulated Chimney Pipe 1250 mm
- 3 - Insulated Chimney Pipe 500 mm
- 4 - Insulated Chimney Pipe 250 mm
- 5 - Insulated Chimney Cone Terminal
- 6 - Insulated 90° Tee Piece with Adapter
- 7 - Insulated 90° Tee with rear Inspection Hatch and Adapter
- 8 - Insulated 45° Tee Piece with Adapter
- 9 - Insulated cleaning hatch
- 10 - Bottom Adapter
- 11 - Insulated Condensate Drain with Bottom Outlet
- 12 - Insulated Condensate Drain with Side Outlet
- 13 - Insulated Bottom Cap
- 14 - 90° Chimney Elbow
- 15 - 45° Chimney Elbow
- 16 - 30° Chimney Elbow
- 17 - 90° Chimney Bend with Inspection Hatch
- 18 - Roof Flashing for Chimney 0°-5°
- 19 - Roof Flashing for Chimney 5°-20°
- 20 - Roof Flashing for Chimney 20°-35°
- 21 - Roof Flashing for Chimney 35°-50°
- 22 - Rain Collar
- 23 - Square Wall & Ceiling Plate
- 24 - Rain Cap
- 25 - Locking Band
- 26 - Wall Support, Adjustable 50-150
- 27 - Wall Support, Adjustable 150-250
- 28 - Wall Support, Adjustable 250-350
- 29 - Wall Support 400/500/550
- 30 - Wall Support 600/700/800
- 31 - Rafter & Joist Support 800 mm
- 32 - Mounting Clamp
- 33 - Rigid Roof Brace Kit